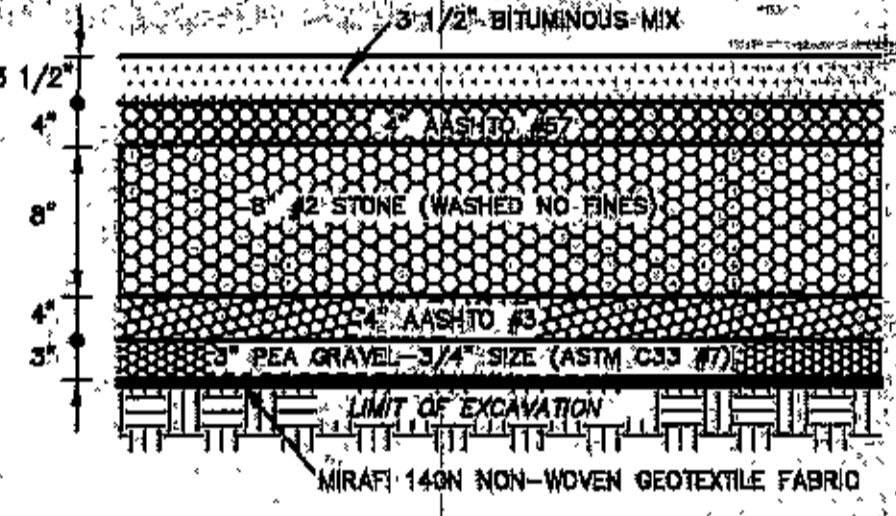
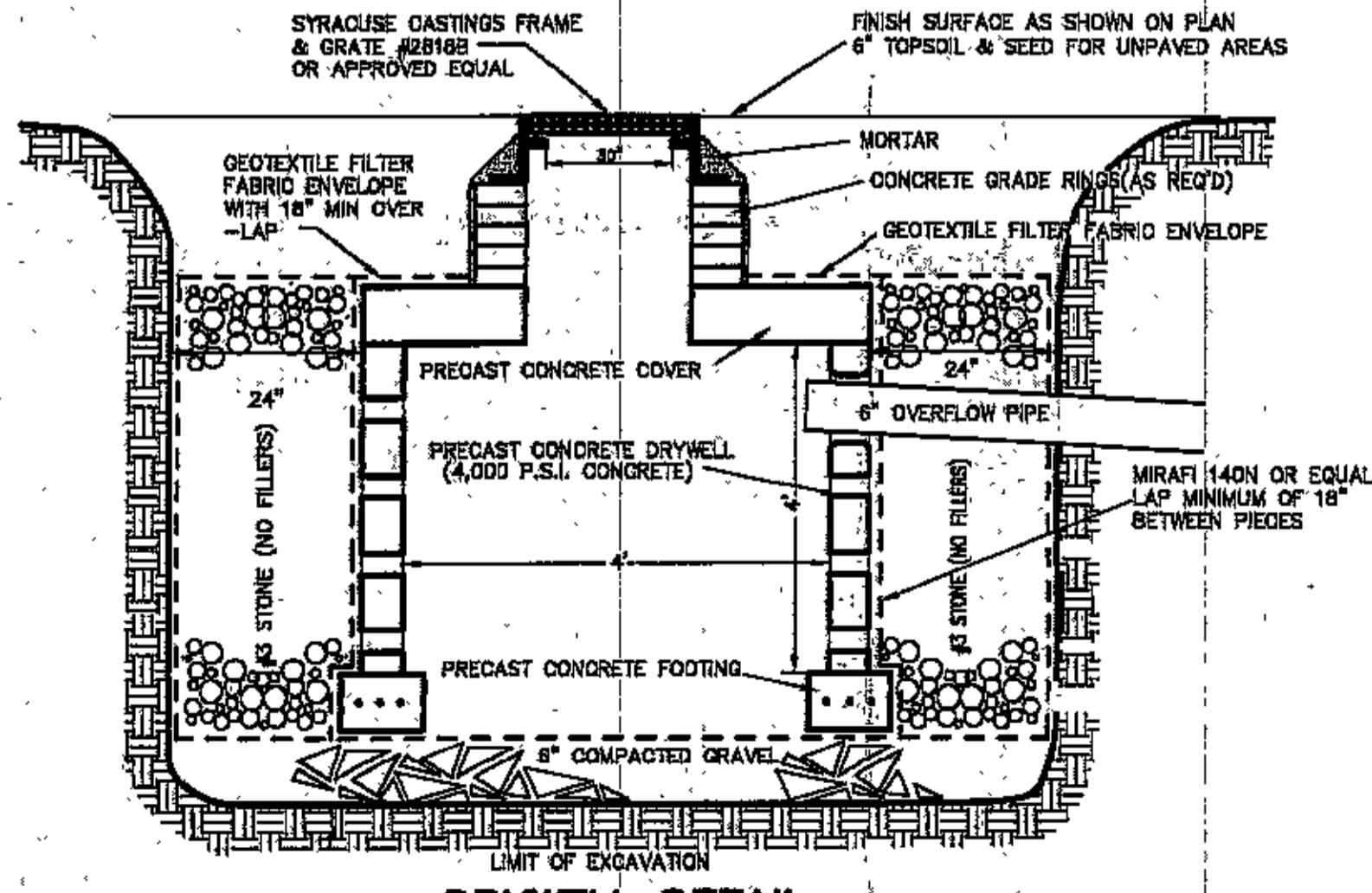


Sieve Size	Percent Passing AASHTO #3	Percent Passing ASTM C335C Size #7	Percent Passing AASHTO #57
3/8"	100	100	100
1/2"	95-100	100	100
3/4"	35-70	100	100
1"	0-15	90-100	75-100
1 1/4"	0-5	20-55	25-60
1 1/2"	0-5	0-15	25
1 3/4"	0-5	0-5	0-10
2"	0	0	0-5

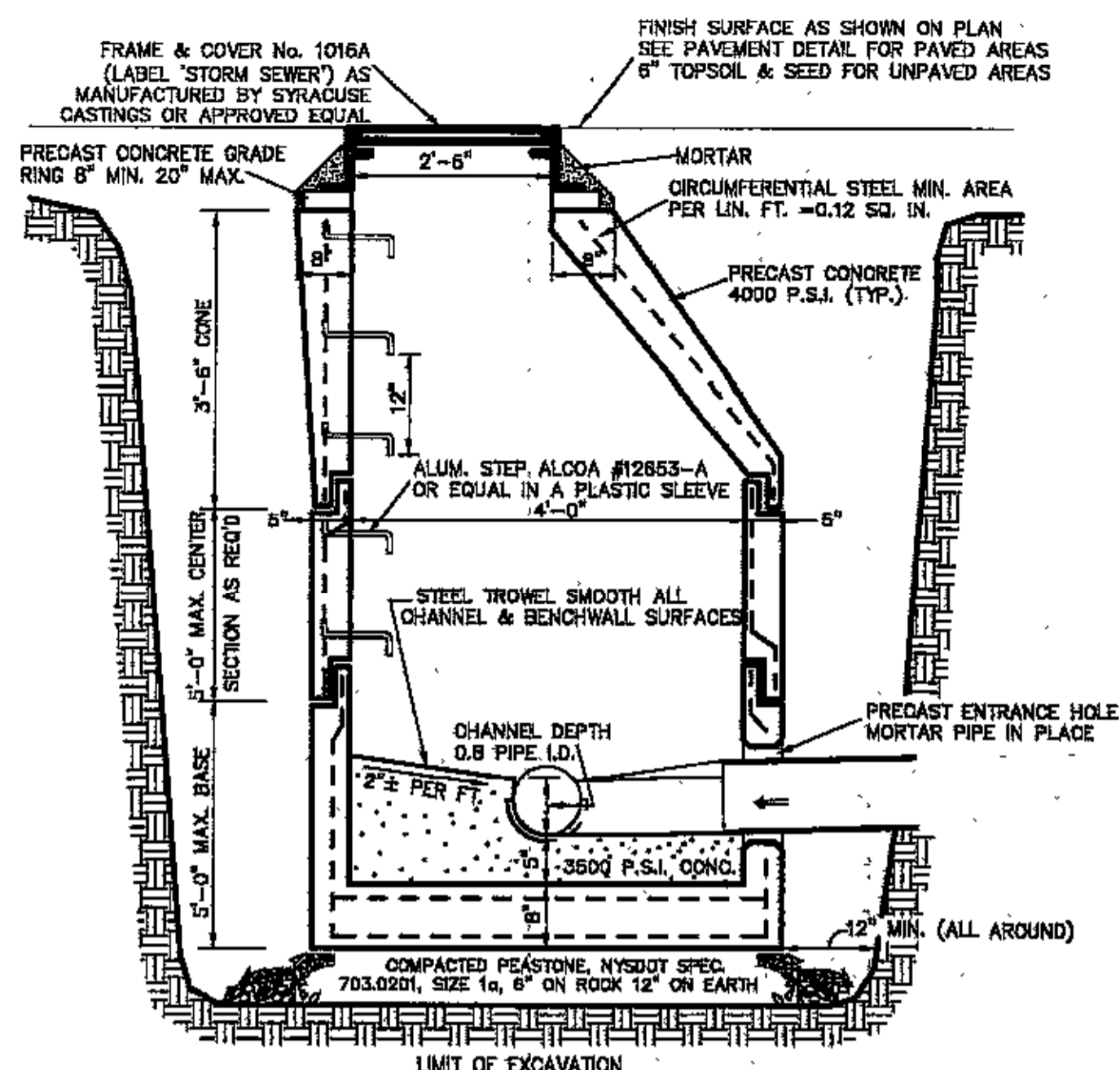


**POROUS PAVEMENT DETAIL**  
NOT TO SCALE

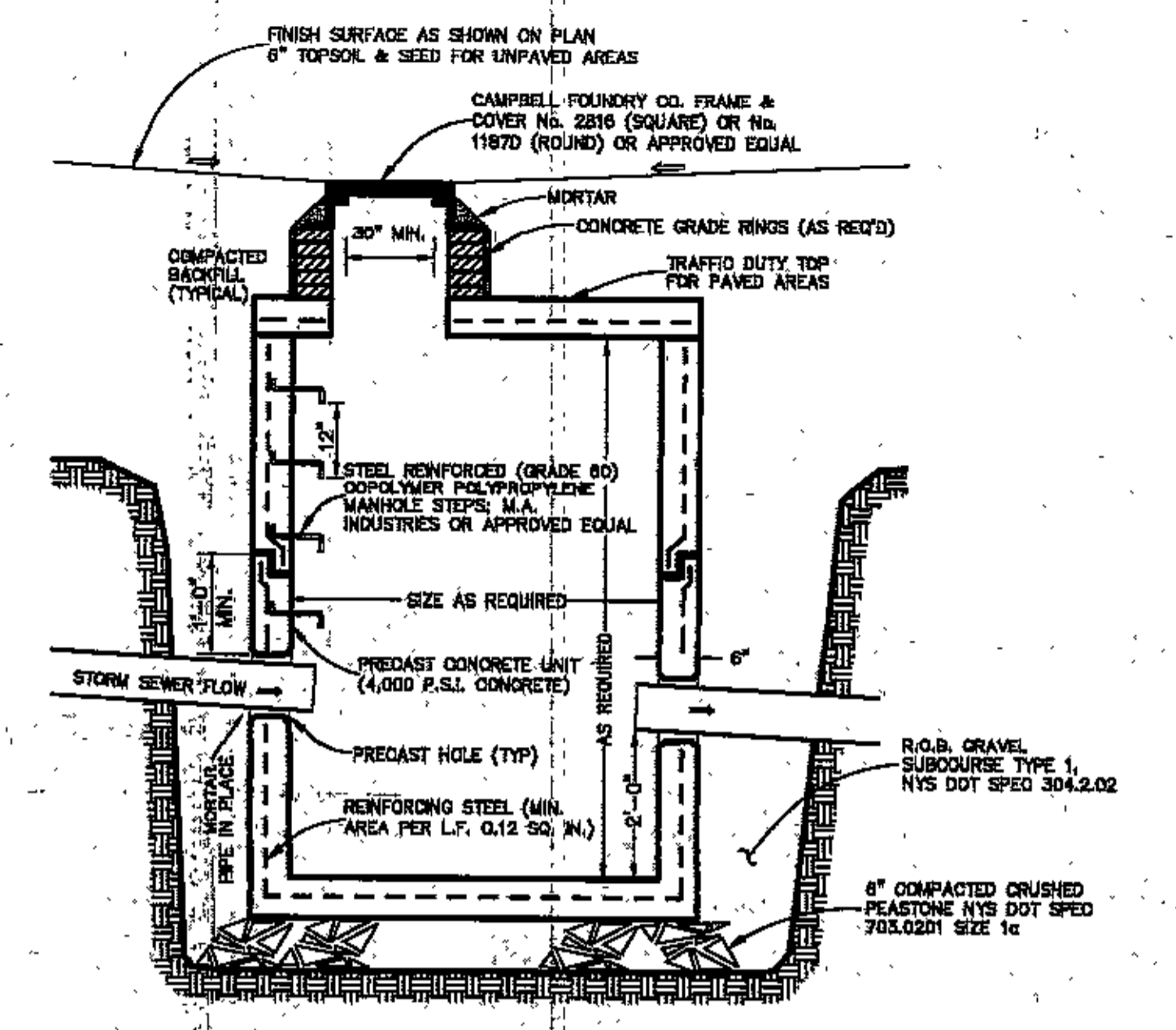


**DRYWELL DETAIL**  
NOT TO SCALE

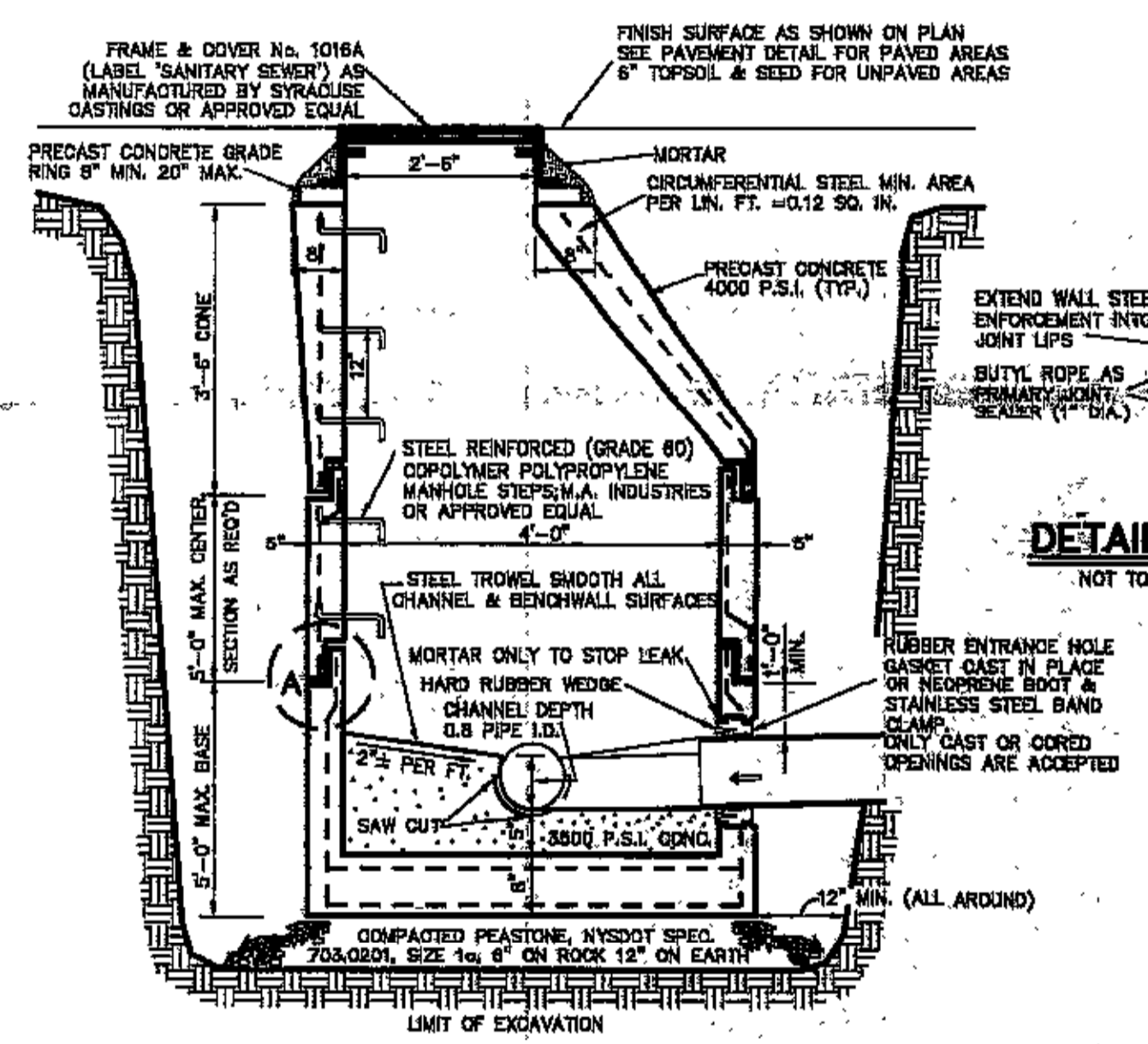
**SWPPP DETAILS**



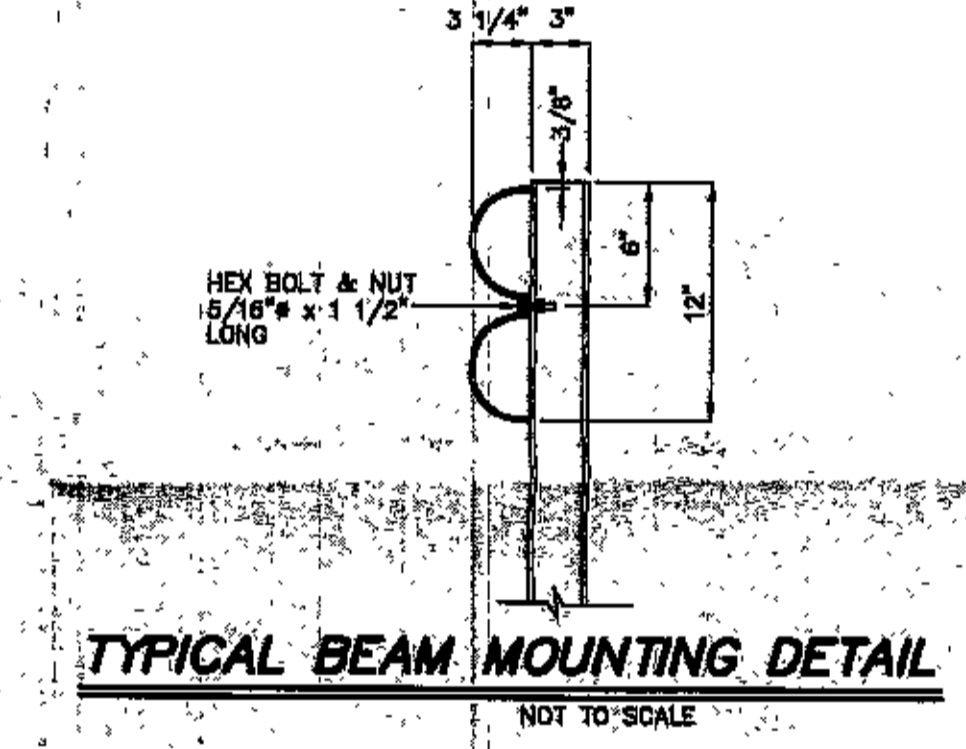
**STORM SEWER MANHOLE DETAIL**  
NOT TO SCALE



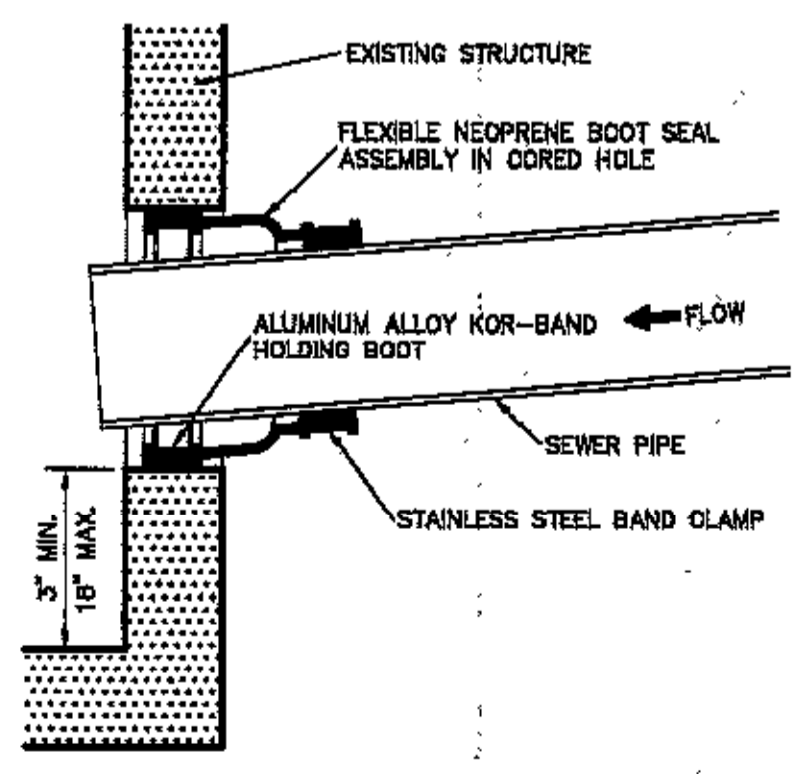
**CATCH BASIN DETAIL**  
NOT TO SCALE



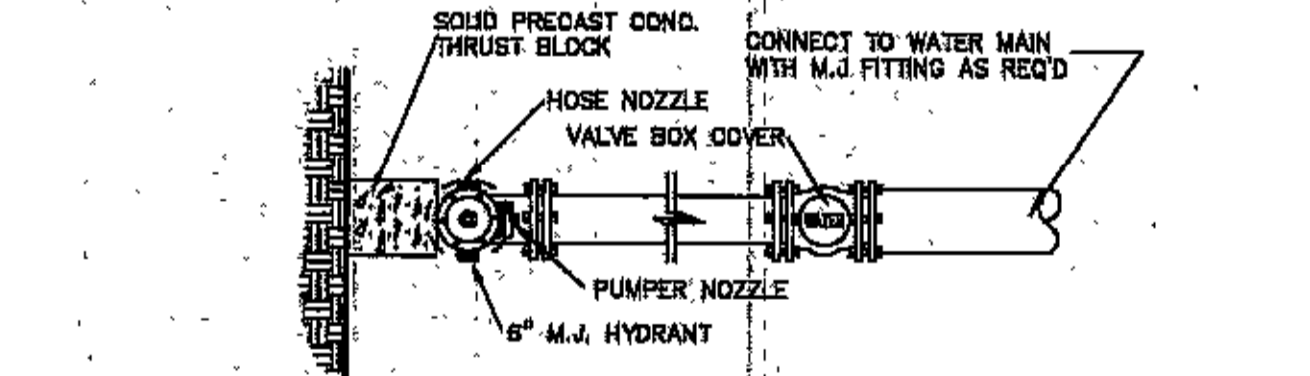
**SANITARY SEWER MANHOLE DETAIL**  
NOT TO SCALE



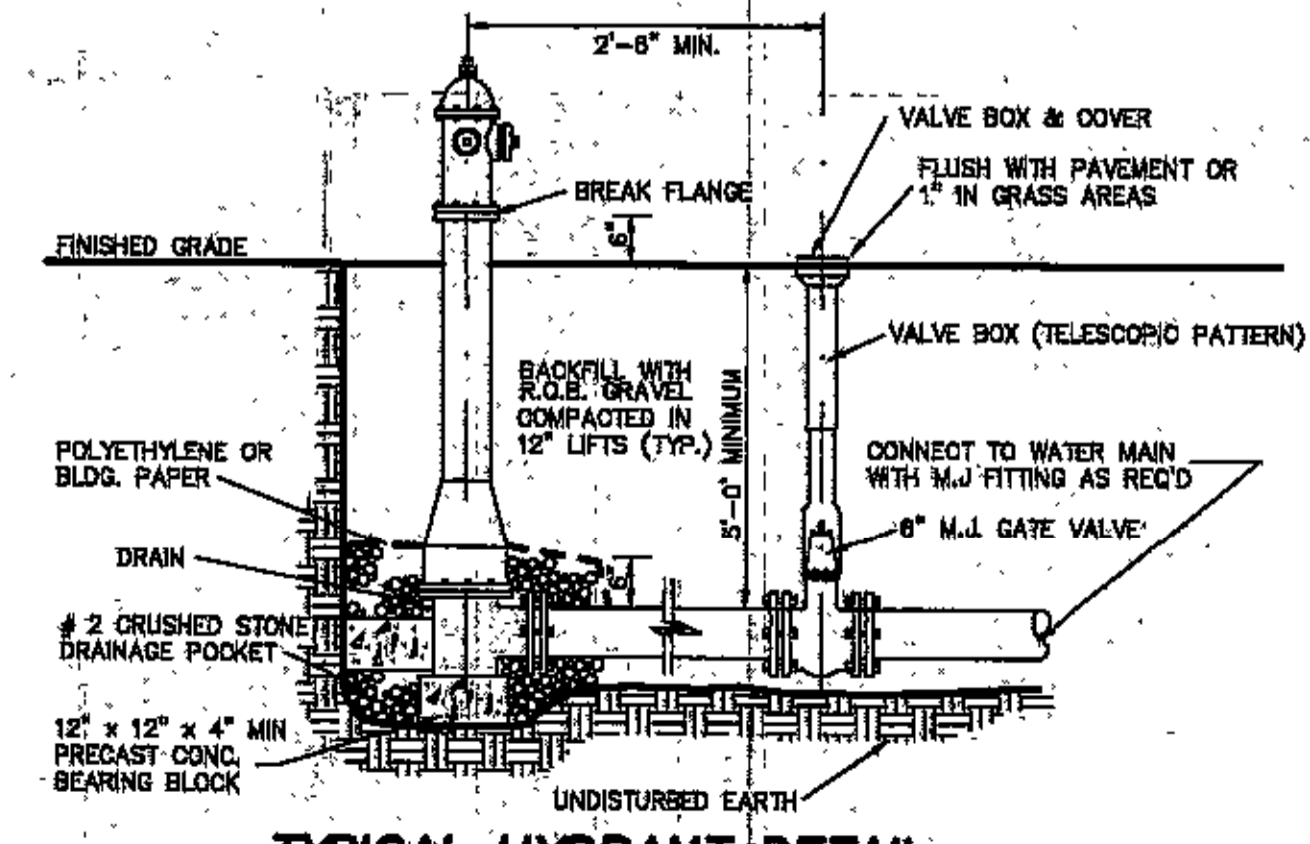
**TYPICAL BEAM MOUNTING DETAIL**  
NOT TO SCALE



**CORED IN FIELD CONNECTION**  
NOT TO SCALE



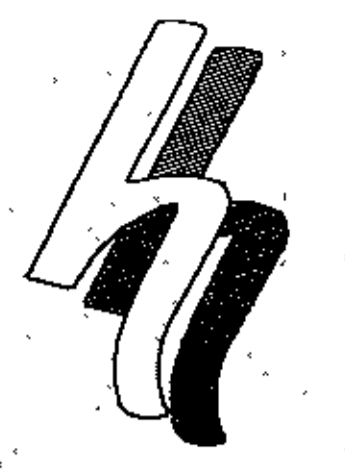
**TYPICAL HYDRANT DETAIL**  
NOT TO SCALE



**TYPICAL HYDRANT DETAIL**  
NOT TO SCALE

**SITE DETAILS**

FOR MUNICIPAL APPROVAL ONLY-NOT INTENDED FOR CONSTRUCTION



**HERSBERG & HERSBERG**  
Consulting Engineers and Land Surveyors  
18 Locust Street  
Albany, New York 12203

ALTERATION OF THIS DOCUMENT EXCEPT BY A LICENSED PROFESSIONAL ENGINEER OR LAND SURVEYOR IS ILLEGAL.



DATE	REVISIONS
7/2/11	RELOCATE OTD
7/18/11	ILLUSTRATION

PROPOSED SWPPP DETAILS & SITE DETAILS FOR  
 No. 1730 CENTRAL AVENUE  
 VILLAGE OF COLONIE  
 ALBANY COUNTY, STATE OF NEW YORK

FILE: 100187  
 DATE: 6/28/11  
 SCALE: 1"=40'  
 CIRC. DRW. 100187-4.DWG

